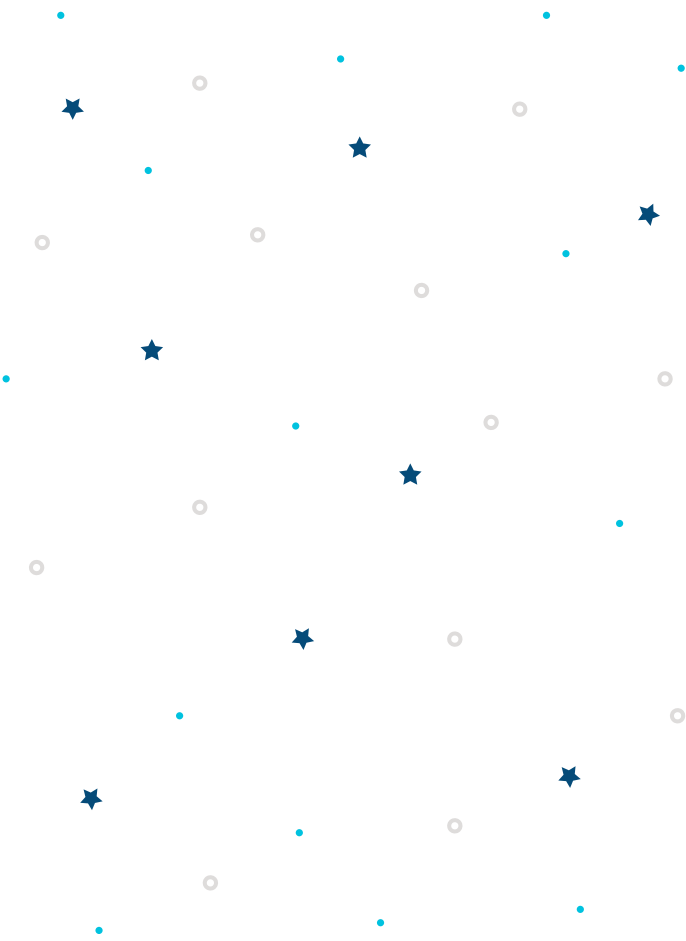




A contribution has been made towards your future education.

Congrats!



Learn more at troweprice529.com • Call 800.369.3641



This card is not to be interpreted as a contract of any kind. The account holder should contact the T. Rowe Price College Savings Plan directly to verify the amount contributed on your behalf.

Congratulations!

_____ has made a gift of \$_____ towards your education.